

MPOWER



MANUAL DE PARTES

**MARTILLO
DEMOLEDOR
ZIG-DW-25B**



**HERRAMIENTAS
ELÉCTRICAS**

YouTube



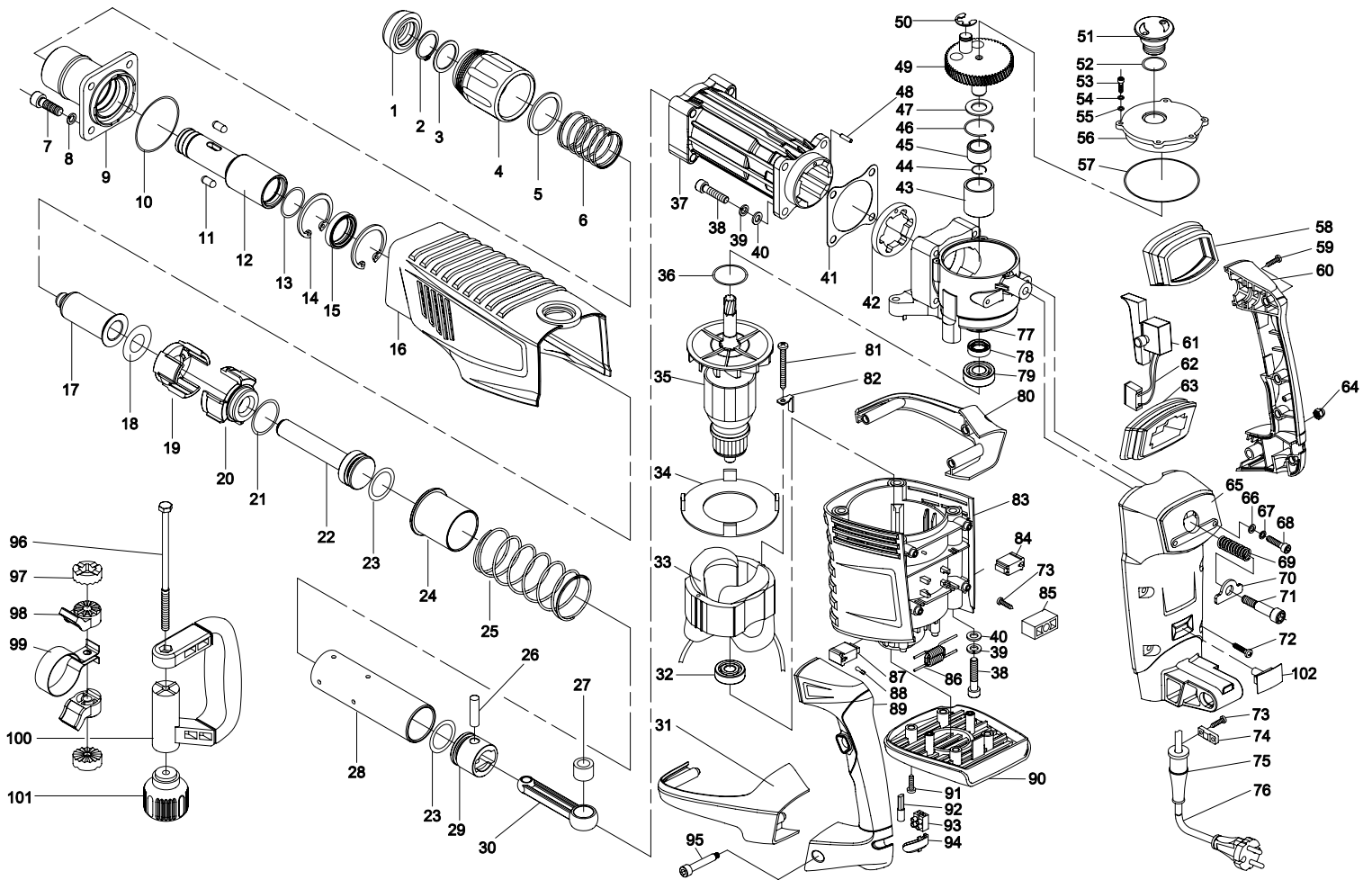
www.mpower.com.mx



ÍNDICE

MARTILLO DEMOLEDOR ZIG-DW-25B

E-1 GENERAL ASSEMBLY **PAG 03**





GENERAL ASSEMBLY

SEC.	NO. PARTE	DESCRIPCIÓN	CANTIDAD
1	DW-25B-1	Front Cap	1
2	DW-25B-2	Circlip $\varnothing 28$	1
3	DW-25B-3	Circlip $\varnothing 38.5 \times \varnothing 37.5 \times 1.5$	1
4	DW-25B-4	Slider	1
5	DW-25B-5	Spring Washer	1
6	DW-25B-6	Spring	1
7	DW-25B-7	Bolt M10 \times 30	4
8	DW-25B-8	Spring Washer $\varnothing 10$	4
9	DW-25B-9	Tool Holder	1
10	DW-25B-10	O-Ring $\varnothing 69 \times \varnothing 2$	1
11	DW-25B-11	Steell Ball Pole $\varnothing 8 \times 19.5$	2
12	DW-25B-12	Guard Ring Sleeve	1
13	DW-25B-13	O-Ring $\varnothing 37 \times \varnothing 2.5$	1
14	DW-25B-14	Circlip $\varnothing 41$	2
15	DW-25B-15	Grease Seal Ferrule	1
16	DW-25B-16	Front Housing	1
17	DW-25B-17	Second Striker	1
18	DW-25B-18	Anti-Vibration Ring	1
19	DW-25B-19	Guide Bush	1
20	DW-25B-20	Cylinder Connecting Plate	1
21	DW-25B-21	O-Ring $\varnothing 43 \times \varnothing 3$	1
22	DW-25B-22	Ram	1
23	DW-25B-23	O-Ring $\varnothing 40 \times \varnothing 5$	2
24	DW-25B-24	Control Bush	1
25	DW-25B-25	Compress Spring	1
26	DW-25B-26	Piston Pin	1
27	DW-25B-27	Needle Bearing NK14/16	1
28	DW-25B-28	Cylinder	1
29	DW-25B-29	Piston	1
30	DW-25B-30	Connecting Rod	1
31	DW-25B-31	Left Shell	1
32	DW-25B-32	Bearing 6201	1


GENERAL ASSEMBLY

SEC.	NO. PARTE	DESCRIPCIÓN	CANTIDAD
33	DW-25B-33	Stator	1
34	DW-25B-34	Air Guider	1
35	DW-25B-35	Rotor	1
36	DW-25B-36	O-Ring $\varphi 38 \times \varphi 1.75$	1
37	DW-25B-37	Cylinder Case	
38	DW-25B-38	Screw M8 \times 45	8
39	DW-25B-39	Spring Washer $\varphi 8$	8
40	DW-25B-40	Flat Washer $\varphi 8$	8
41	DW-25B-41	Seal Washer	1
42	DW-25B-42	Back Up Pad	1
43	DW-25B-43	Bearing Coat	1
44	DW-25B-44	Circlip $\varphi 13 \times \varphi 1.3$	1
45	DW-25B-45	Rolling Element Assembly	2
46	DW-25B-46	Circlip $\varphi 32 \times \varphi 1.5$	1
47	DW-25B-47	Adjusting Washer	1
48	DW-25B-48	Straight Pin B4X16	1
49	DW-25B-49	Big Gear	1
50	DW-25B-50	Big Gear	1
51	DW-25B-51	Grease Window Cover	1
52	DW-25B-52	O-Ring $\varphi 28 \times \varphi 3$	1
53	DW-25B-53	Bolt M4 \times 14	5
54	DW-25B-54	Spring Washer $\varphi 4$	5
55	DW-25B-55	Flat Washer $\varphi 4$	5
56	DW-25B-56	Upper Cover	1
57	DW-25B-57	O-Ring $\varphi 84 \times \varphi 1.5$	1
58	DW-25B-58	Upper Anti-vibration	1
59	DW-25B-59	Self-tapping Screw	4
60	DW-25B-60	Right Handle	1
61	DW-25B-61	Switch	1
62	DW-25B-62	Capacitance	1
63	DW-25B-63	Down Anti-vibration Cover	1
64	DW-25B-64	Nut M6	1


GENERAL ASSEMBLY

SEC.	NO. PARTE	DESCRIPCIÓN	CANTIDAD
65	DW-25B-65	Rear Housing	1
66	DW-25B-66	Rear Housing	2
67	DW-25B-67	Spring Washer $\phi 5$	2
68	DW-25B-68	Screw M5 \times 40	2
69	DW-25B-69	Anti-vibration Spring	1
70	DW-25B-70	Anti-vibration Washer	1
71	DW-25B-71	Anti-vibration Bolt	1
72	DW-25B-72	Self-tapping Screw ST5 \times 25	4
73	DW-25B-73	Self-tapping Screw ST4 \times 16	3
74	DW-25B-74	Cord Clamp	1
75	DW-25B-75	Cord Sheath	1
76	DW-25B-76	Plug+Cord	1
77	DW-25B-77	Gear Box	1
78	DW-25B-78	Grease Seal	1
79	DW-25B-79	Bearing 6202-NSK	1
80	DW-25B-80	Right Shell	1
81	DW-25B-81	Self-tapping Screw	2
82	DW-25B-82	Rotor Clamp	2
83	DW-25B-83	Motor Housing	1
84	DW-25B-84	Brush Holder Seat	2
85	DW-25B-85	Fixing Seat (Only for 25B)	1
86	DW-25B-86	Inductance	1
87	DW-25B-87	Carbon Brushes	2
88	DW-25B-88	Terminal Lug	2
89	DW-25B-89	Left Handle	1
90	DW-25B-90	Bottom Cover	1
91	DW-25B-91	Self-tapping Screw	7
92	DW-25B-92	Neon Light	1
93	DW-25B-93	Terminal	2
94	DW-25B-94	Neon Light Cover	1
95	DW-25B-95	Bolt	1
96	DW-25B-96	Bolt M8 \times 145	1



SEC.	NO. PARTE	DESCRIPCIÓN	CANTIDAD
97	DW-25B-97	Clump Seat	2
98	DW-25B-98	Klemnteil	2
99	DW-25B-99	Collar	1
100	DW-25B-100	Auxiliary Handle	1
101	DW-25B-101	Star Knob	1
102	DW-25B-102	Speed Dial Cover (Only for	1

MPOWER

MANUAL DE PARTES

**MARTILLO DEMOLEDOR
ZIG-DW-25B**



**LADA SIN COSTO
01.800.506.82.86**

SÍGUENOS EN:

YouTube



www.mpower.com.mx

**Km 126.5 Carretera Federal México-Puebla, Momoxpan, Cholula, Puebla.
MÉXICO. CP 72760**