

# MPOWER



## MANUAL DE PARTES

### RODILLO DOBLE VIBRATORIO RWL32



CONSTRUCCIÓN



[www.mpower.com.mx](http://www.mpower.com.mx)

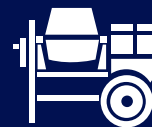
# MPOWER



RODILLO DOBLE VIBRATORIO / RWL32

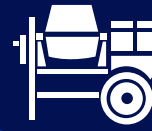


CONSTRUCCIÓN

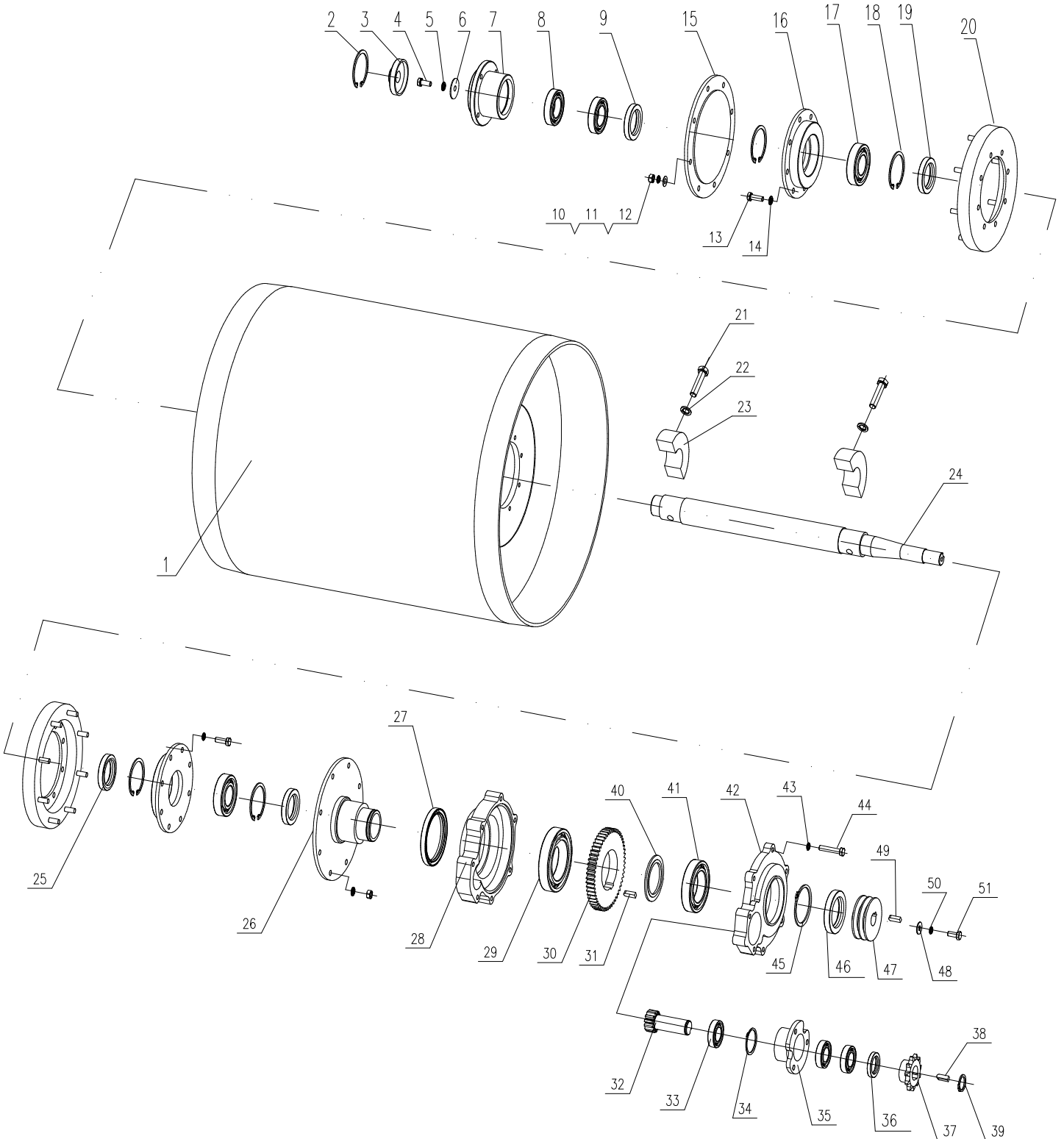


# RODILLO DOBLE VIBRATORIO RM75

<b>E-1</b>	▶ REAR DRUM ASSEMBLY (VIBRATING DRUM) .....	<b>PAG 04</b>
<b>E-2</b>	▶ FRONT DRUM ASSEMBLY.....	<b>PAG 08</b>
<b>E-3</b>	▶ WALKING TRANSMISSION SYSTEM.....	<b>PAG 10</b>
<b>E-4</b>	▶ VIBRATORY CLUTCH SYSTEM.....	<b>PAG 13</b>
<b>E-5</b>	▶ HANDRAIL ASSEMBLY .....	<b>PAG 15</b>
<b>E-6</b>	▶ POWER SYSTEM .....	<b>PAG 18</b>
<b>E-7</b>	▶ FRAME ASSEMBLY .....	<b>PAG 20</b>
<b>E-8</b>	▶ COVER ASSEMBLY .....	<b>PAG 22</b>
<b>E-9</b>	▶ FRAME ASSEMBLY .....	<b>PAG 24</b>



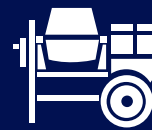
# REAR DRUM ASSEMBLY (VIBRATING DRUM)





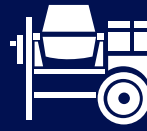
## REAR DRUM ASSEMBLY (VIBRATING DRUM)

SEC.	NO. PARTE	DESCRIPCIÓN	CANTIDAD
1	0260101C	Roller assembly	1
2	DQK020117	Circlip for hole 62	1
3	0260213	Cover	1
4	LSK020502	Inner hexagon bolt M8×20	1
5	DZK020104	Spring washer 8	1
6	0260818	Extra large flat washer 8.5×28	1
7	0260102A	Bearing support	2
8	NZK011307	Deep groove ball bearing 6007-2Z	2
9	MFK011001	Lip seal $\Phi 45 \times \Phi 62 \times 8$	1
10	LMK010103	Nut M8	16
11	DZK020104	Spring washer8	16
12	DZK010104	Flat washer8	16
13	LSK010503	Hexagon bolt M8×25	16
14	DZK020104	Spring washer8	16
15	0260211	Cover of driven end	1
16	0260102A	Bearing support	2
17	NZK011407	Deep groove ball bearing6207-2Z	2
18	DQK020119	Circlip for hole72	4
19	MFK010901	Lip seal $\Phi 42 \times \Phi 72 \times 8$	2
20	0260107	Shock absorber	2
21	LSK030703	Hexagon bolt M12×45-12.9	2
22	DZK020106	Spring washer12	2
23	0260105C	Eccentric block	2
24	0260104B	Main axis	1
25	MFK010901	Lip seal $\Phi 42 \times \Phi 72 \times 8$	
26	0260210	Drive end shield	1
27	MFK011701	Lip seal $\Phi 80 \times \Phi 100 \times 10$	1
28	0260201A	Gear box	1
29	NZK011314	Deep groove ball bearing6014-2Z	1
30	0260203	Gear	1
31	0260207	Flat key 12×16.5	1
32	0260204B	Input gear	1

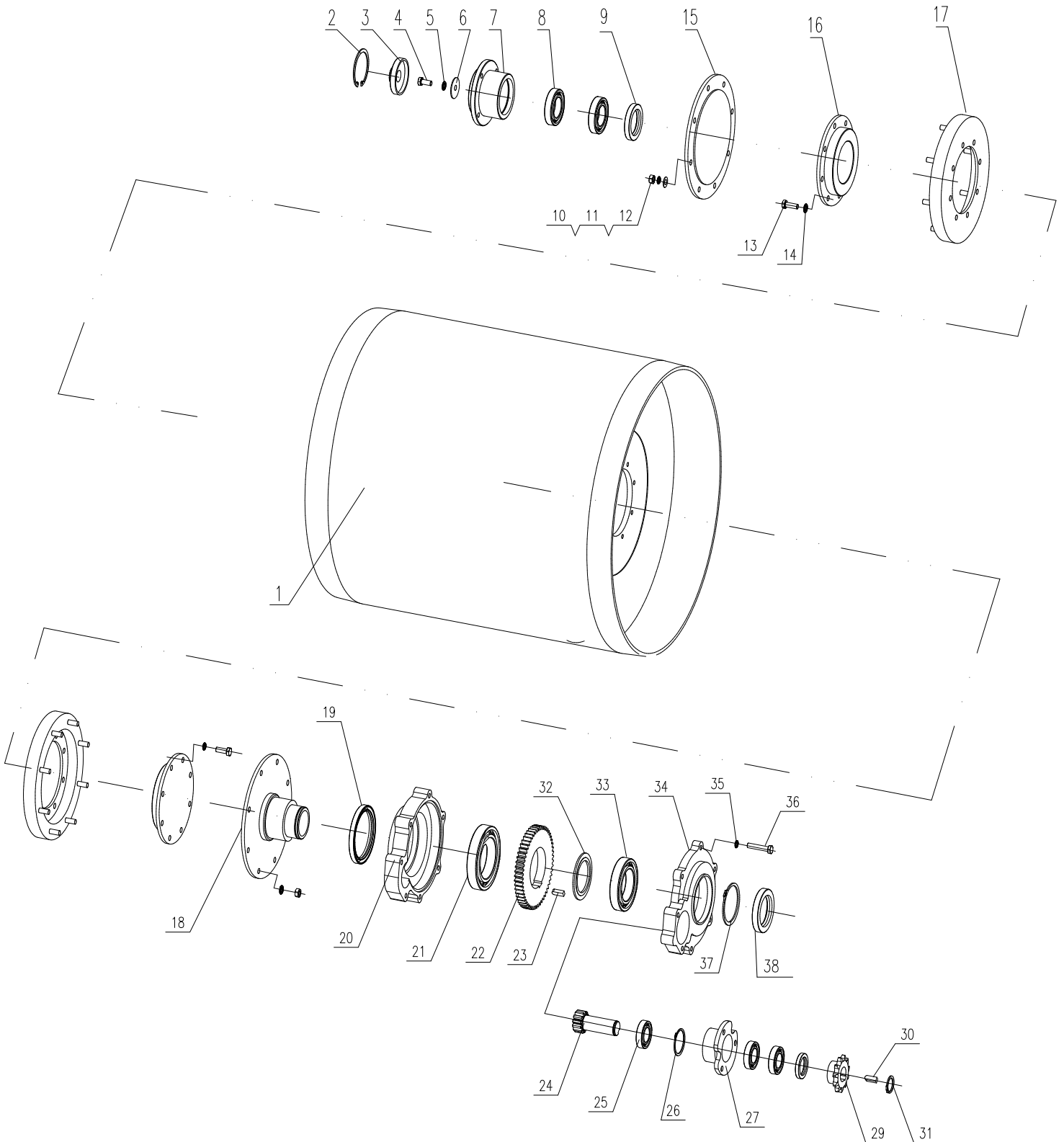


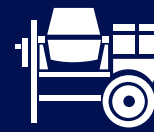
## REAR DRUM ASSEMBLY (VIBRATING DRUM)

SEC.	NO. PARTE	DESCRIPCIÓN	CANTIDAD
33	NZK040205	NJ205	2
34	DQK020113	Circlip for hole47	2
35	0260205E	Bearing support	1
36	MFK013001	Lip sealΦ38×Φ50×7	1
37	0260209C	Driven sprocket	1
38	3541120	Flat key8×7×25	1
39	DQK010112	Circlip for shaft 25	1
40	0260206	Linker	2
41	NZK011311	Deep groove ball bearing6011-2Z	1
42	0260202A	Gear box cover	
43	DZK020104	Spring washer8	7
44	LSK010507	Hexagon bolt M8×45	7
45	DQK010121	Circlip for shaft55	1
46	MFK011202	Lip sealΦ55×Φ75×8	
47	0260805	Vibratory pulley	1
48	0260818	Extra large flat washer8.5×28	
49	0120521	Flat key8×35	1
50	DZK020104	Spring washer8	
51	LSK010501	Hexagon bolt M8×16	1



# FRONT DRUM ASSEMBLY

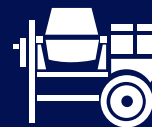




## FRONT DRUM ASSEMBLY

SEC.	NO. PARTE	DESCRIPCIÓN	CANTIDAD
1	0260101C	Roller assembly	1
2	DQK020117	Circlip for hole 62	1
3	0260213	Cover	1
4	LSK020502	Inner hexagon bolt M8×20	1
5	DZK020104	Spring washer 8	1
6	0260818	Extra large flat washer 8.5×28	1
7	0260102A	Bearing support	2
8	NZK011307	Deep groove ball bearing 6007-2Z	2
9	MFK011001	Lip seal $\Phi 45 \times \Phi 62 \times 8$	1
10	LMK010103	Bolt M8	16
11	DZK020104	Spring washer8	16
12	DZK010104	Flat washer8	16
13	LMK010503	Hexagon bolt M8×25	16
14	DZK020104	Spring washer8	16
15	0260211	Cover of driven end	1
16	3070401	Baffle	2
17	0260107	Shock absorber	2
18	0260210	Driven end shield	1
19	MFK011701	Lip seal $\Phi 80 \times \Phi 100 \times 10$	1
20	0260201A	Gear box	1
21	NZK011314	Deep groove ball bearing6014-2Z	1
22	0260203	Gear	1
23	0260207	Flat key12×16.5	1
24	0260204B	Input gear	1
25	NZK040205	NJ205	2
26	DQK020113	Circlip for hole47	2
27	0260205E	Bearing support	1
28	MFK013001	Lip seal $\Phi 38 \times \Phi 50 \times 7$	1
29	0260209C	Driven sprocket	1
30	3541120	Flat key8×7×25	1
31	DQK010112	Circlip for shaft25	1
32	0260206	Linker	1

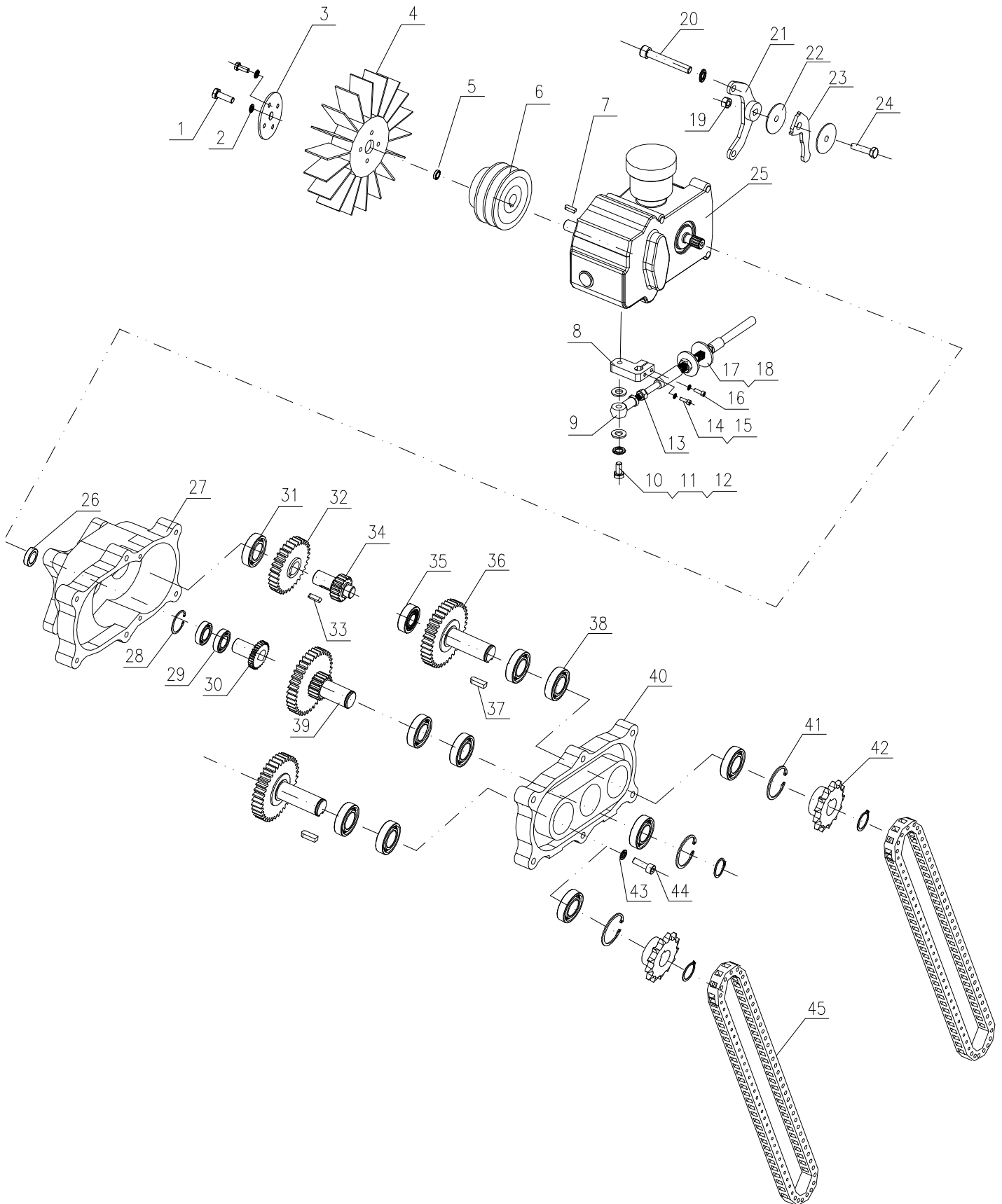


**FRONT DRUM ASSEMBLY**

SEC.	NO. PARTE	DESCRIPCIÓN	CANTIDAD
33	NZK011311	Deep groove ball bearing6011-2Z	1
34	0260202A	Gear box cover	
35	DZK020104	Spring washer8	7
36	LSK010507	Hexagon bolt M8×45	7
37	DQK010121	Circlip for shaft55	1
38	MFK011202	Lip sealΦ55×Φ75×8	



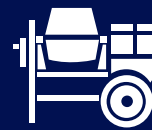
# WALKING TRANSMISSION SYSTEM





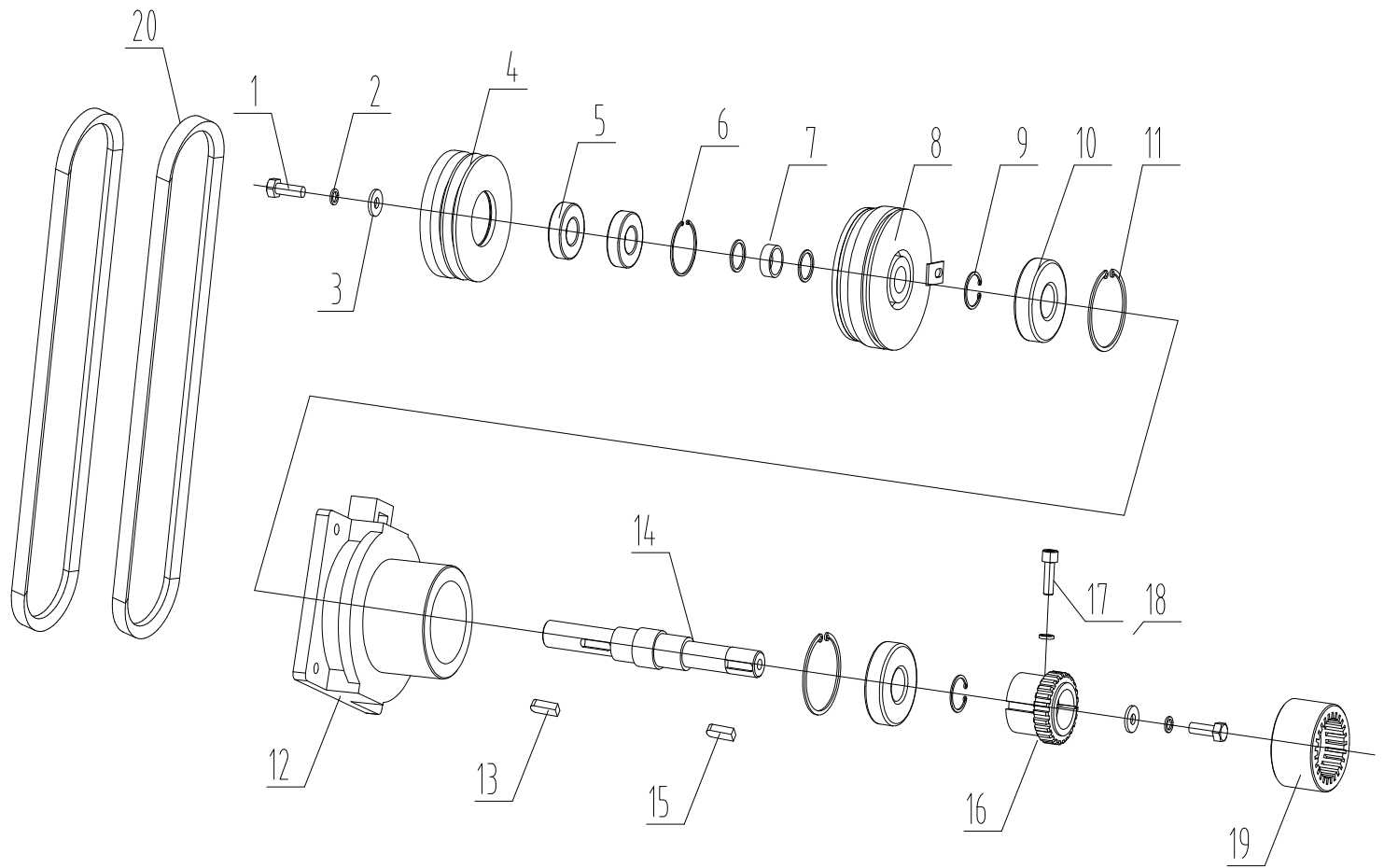
## WALKING TRANSMISSION SYSTEM

SEC.	NO. PARTE	DESCRIPCIÓN	CANTIDAD
1	LSK010402	Hexagon bolt M6×16	5
2	DZK020103	Spring washer6	5
3	0260311	Fan cover	1
4	0260905	Gear fan	1
5	3040607	Fan cover	
6	3040605C	Transmission double pulley	1
7	3040506	A key 5×28	1
8	3040602	Transmission crank arm	1
9	NZK120102	Articulated bearing M8	1
10	LSK010502	Hexagon bolt M8×20	1
11	DZK020104	Spring washer8	1
12	DZK010104	Washer 8	2
13	LMK010103	Hexagon nut M8	1
14	3070306	Tightening screw of crank arm(s)	1
15	DZK020103	Spring washer6	2
16	LSK010402	Hexagon bolt M6×16	1
17	DZK010106	Washer 12	2
18	LMK010105	Hexagon nut M12	2
19	LMK040104	Lock nut M8	1
20	LSK020510	Inner Hexagon bolt M8×60	2
21	3070303	Bypass valve wrench seat(s)	1
22	3070501A	Disc spring 12	2
23	3070304	Bypass valve wrench(s)	1
24	3070305	Bypass valve screw(s)	1
25	0260904	Hydrostatic drive unit(s)	1
26	0260315	Positioning sleeve	1
27	3070302	BDU case (S)	1
28	DQK010112	Circlip for shaft25	1
29	7NZK01130	Bearing 6007-2S	2
30	0260303(S)	First class gear	1
31	NZK011304	Deep groove ball bearing6004-2Z	1
32	0260304A	Second class gear	1

**WALKING TRANSMISSION SYSTEM**

SEC.	NO. PARTE	DESCRIPCIÓN	CANTIDAD
33	3531201	Flat key5×20	1
34	0260305	Third class gear	1
35	NZK040203	Bearing NJ203	1
36	0260307A	Fifth gear shaft	2
37	3531202	Flat key8×30	2
38	NZK011305	Deep groove ball bearing6005-2Z	9
39	0260306	Fourth gear	
40	3070301A	Cover of transmission (S)	
41	DQK020113	Circlip for hole47	3
42	3040603	Drive sprocket	2
43	DZK020104	Spring washer8	2
44	LSK020503	Inner Hexagon bolt M8×25	2
45	0260902E	10A-68L chain	2

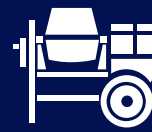
# VIBRATORY CLUTCH SYSTEM



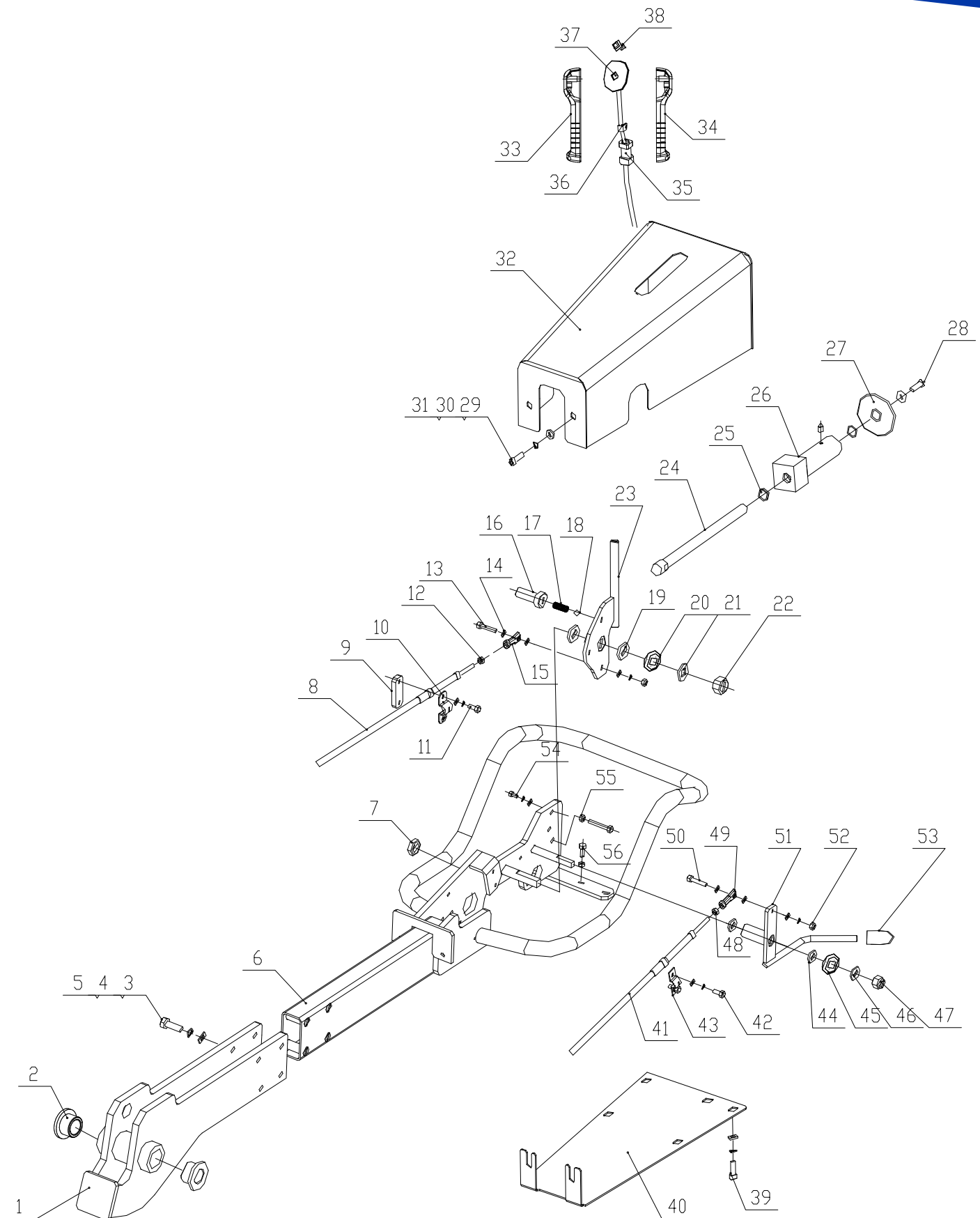


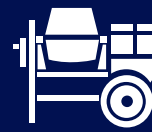
## VIBRATORY CLUTCH SYSTEM

SEC.	NO. PARTE	DESCRIPCIÓN	CANTIDAD
1	LSK010402	Hexagon bolt M6×16	2
2	DZK020104	Spring washer M8	2
3	DZK010104	Flat washer M8	2
4	3041221A	Upper vibratory pulley	1
5	NZK011304	Deep groove ball bearing6004-ZZ	2
6	DQK020112	Circlip for hole Ø42	1
7	3041222A	Adjusting sleeve of clutch	1
8	3070503-CDE	Electromagnetic clutch	1
9	DQK010112	Circlip for shaft Ø25	2
10	NZK011505	Deep groove ball bearing6305-ZZNZK	2
11	DQK020117	Circlip for hole Ø62	2
12	3041219D	Vibration sleeve	1
13	3040506	Transmission shaft 5x28	1
14	3041220D	Transmission shaft	1
15	3531201	Flat key 5x20A	1
16	3040507D	Vibratory roller coupling	1
17	LSK030503	Inner hexagon M8x25-12.9	1
18	DZK020104	Sping washer M8	1
19	0120522	Nylon sleeve NL3	1
20	PDK030306/ PDK010130	Belt SPZ1120	2



### HANDRAIL ASSEMBLY





## HANDRAIL ASSEMBLY

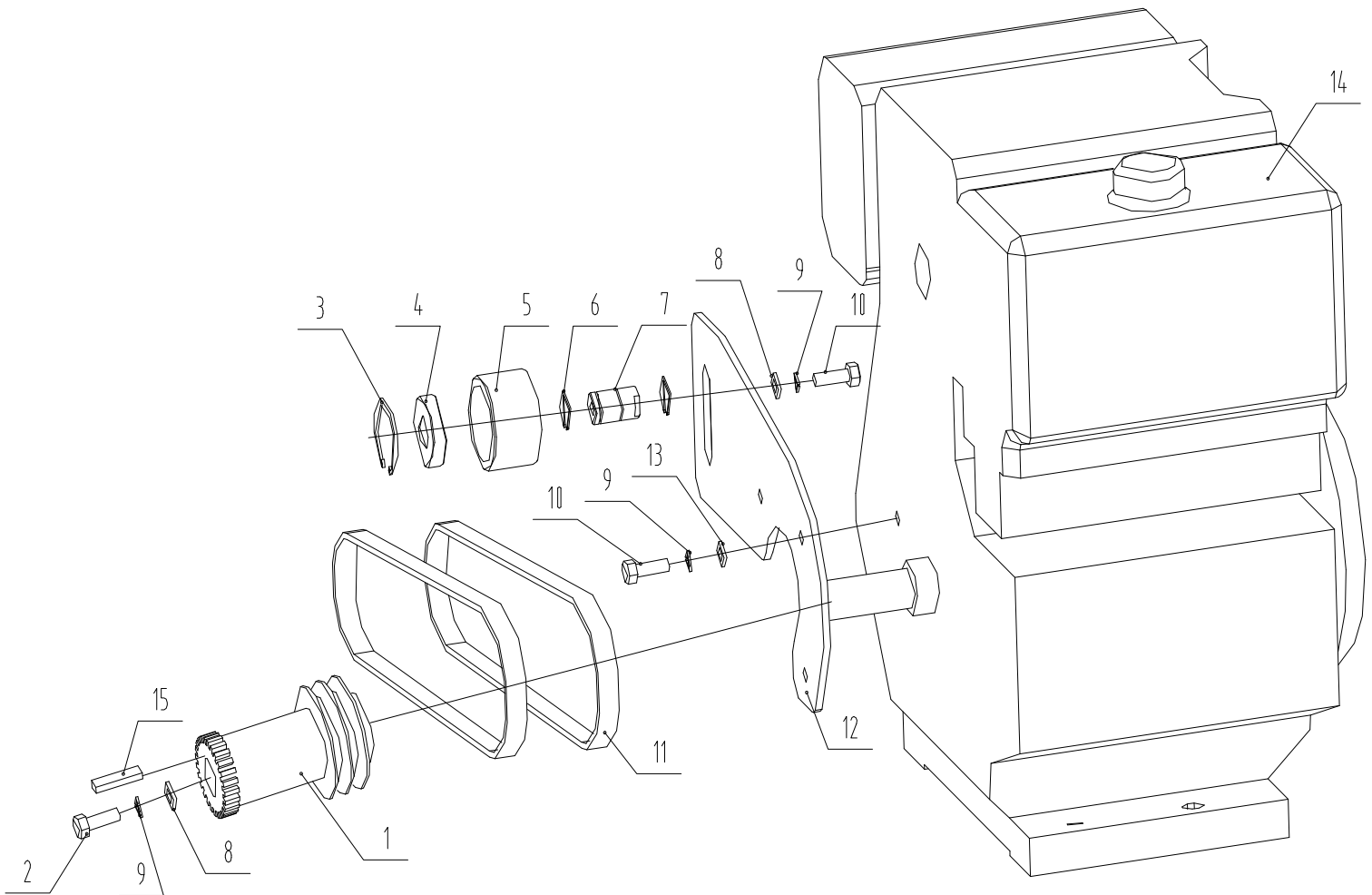
SEC.	NO. PARTE	DESCRIPCIÓN	CANTIDAD
1	3070229	Fixing plate assembly of handrail	1
2	3070219	Flange bearing JHG	2
3	LSK010604	Hexagon bolt M10X30	8
4	DZK020105	Spring washer M10	8
5	DZK010105	M10Flat washer	8
6	3070228	Connecting rod assembly of handrail	1
7	LMK010202	Thin nut M16	2
8	3070214	Direction control line	1
9	3070217	Reversing plate	1
10	3070206	Fixing support of cable line	1
11	LSK010402	Hexagon bolt M6X16	2
12	LMK010102	Nut M6	1
13	LSK010405	Hexagon bolt M6X30	1
14	DZK010103	Flat washer M6	10
15	DZK120102	Joint bearing M8	1
16	3070222	Pilot pin	1
17	3070208	Stop bolt spring	1
18	3070510	steel ball SΦ10	1
19	3070225	Nylon pad	2
20	3070502A	Disc spring	1
21	3070227	Lock pad	1
22	LMK010107	Nut M16	2
23	3070202B	Forward and reverse rod	1
24	3070211B	Upper rod	1
25	25124	Rod seal	2
26	3070216A	Upper rod sleeve	1
27	3070209B	Upper block	1
28	LSK020504	Round head bolt M8X30	1
29	LSK020503	Hexagon bolt M8X25	2
30	DZK020104	M8	6
31	DZK010104	Flat washer M8	6
32	3070205A	The upper cover	1

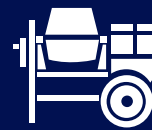




## HANDRAIL ASSEMBLY

SEC.	NO. PARTE	DESCRIPCIÓN	CANTIDAD
33	2031059-1	Left handle	1
34	2031059-2	Right handle	1
35	2030442	Threaded sleeve of handle	1
36	36/RWL32	Tie	1
37	2021085	Panel 1	1
38	DAN090103	Button	1
39	LSK020503	Inner Hexagon bolt M8X25	4
40	3070212	Bottom plate	1
41	3070213	Throttle line for gasoline engine	1
	3101006	Throttle line for diesel engine	1
42	LSK010402	Hexagon bolt M6X15	2
43	3070221	Top board of the throttle line	1
44	3070226	Nylon pad of throttle line	2
45	3070501A	Disc spring	1
46	DZK010103	Flat washer M12	1
47	LMK010102	Self-locking nut M12	1
48	LMK010102	Nut M6	1
49	NZK120102	Joint bearing M8	1
50	LSK010405	Hexagon bolt M6X30	1
51	3070203	Throttle lever	1
52	LMK010102	Nut M6	2
53	3070412	Throttle handball	1
54	LSK010405	Hexagon bolt M6X30	2
55	LSK010610	Hexagon bolt M10X60	1
56	LSK010603	Hexagon bolt M10X25	1

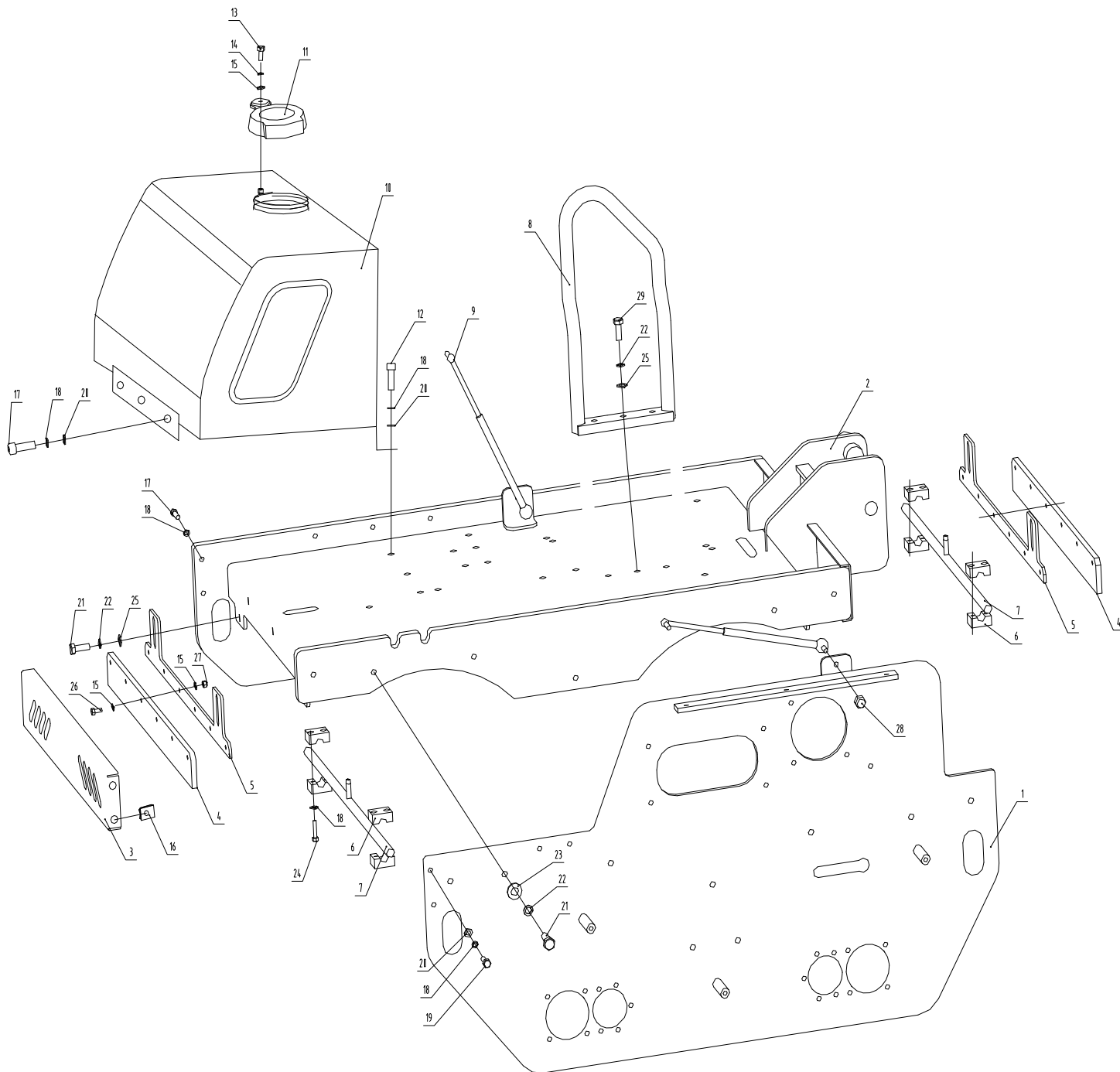




SEC.	NO. PARTE	DESCRIPCIÓN	CANTIDAD
1	3070105	Pulley for gasoline roller	1
2	LSK010503	Outer Hexagon bolt M8X25	1
3	DQK020104	Circlip for hole 24	1
4	NZK011404	Bearing 6204-ZZ	1
5	3070402A	Tensioner pulley	1
6	DQK010110	Circlip for shaft 20	2
	3070129	Shaft of tensioner pulley	1
7	3101009	Shaft of tensioner pulley	1
8	0260818	Extra thick Flat washer8.5X28	2
9	DZK020104	Spring washer 8	5
10	LSK	Outer Hexagon bolt M8X20	4
11	PDK010140	Belt SPZ837	2
12	3070130A	Mounting plate	1
13	DZK010104	Flat washer8	3
14	14/RWL32	Gasoline engine	1
15	15/RWL32	Flat key	1



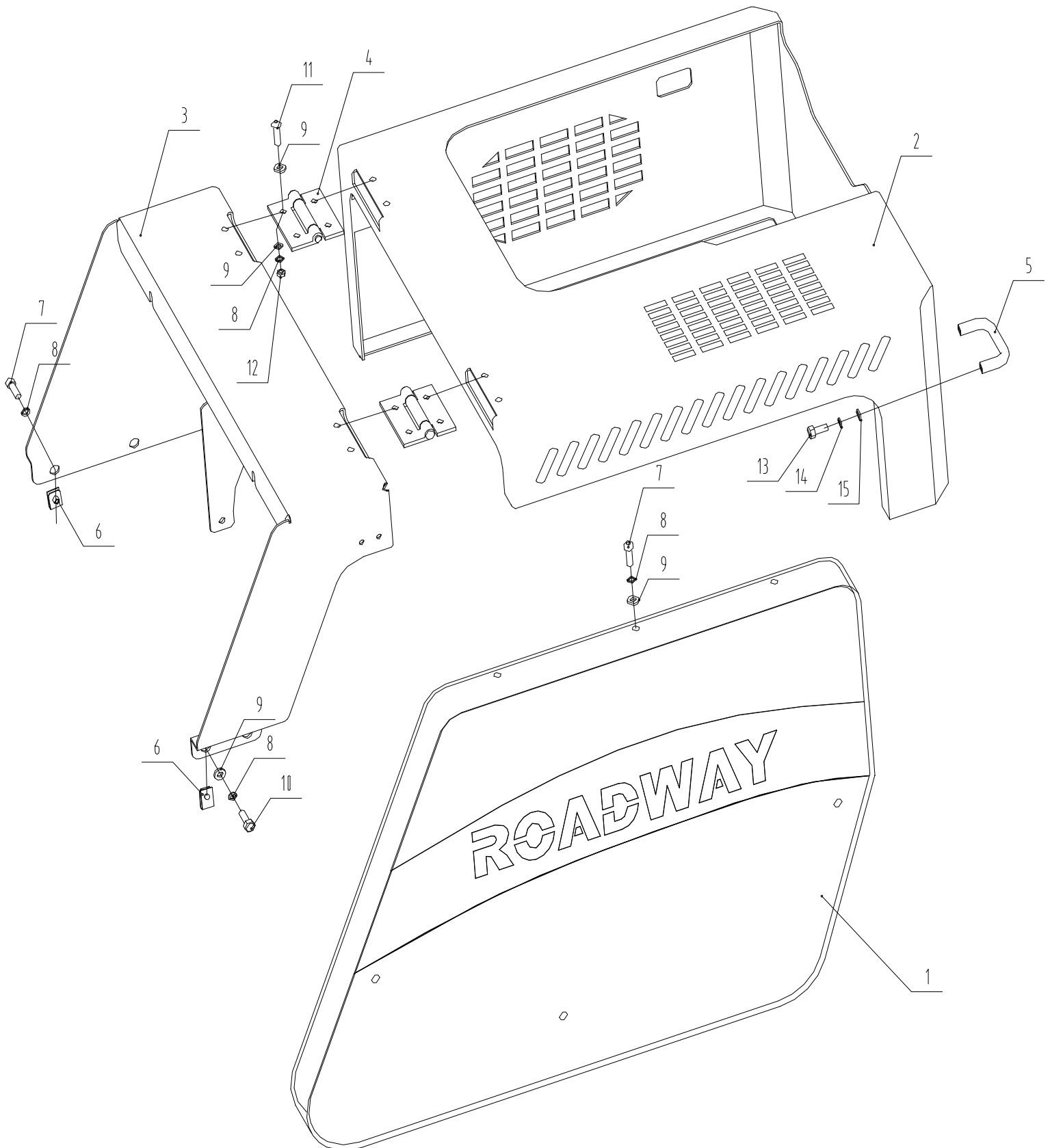
## FRAME ASSEMBLY

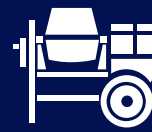




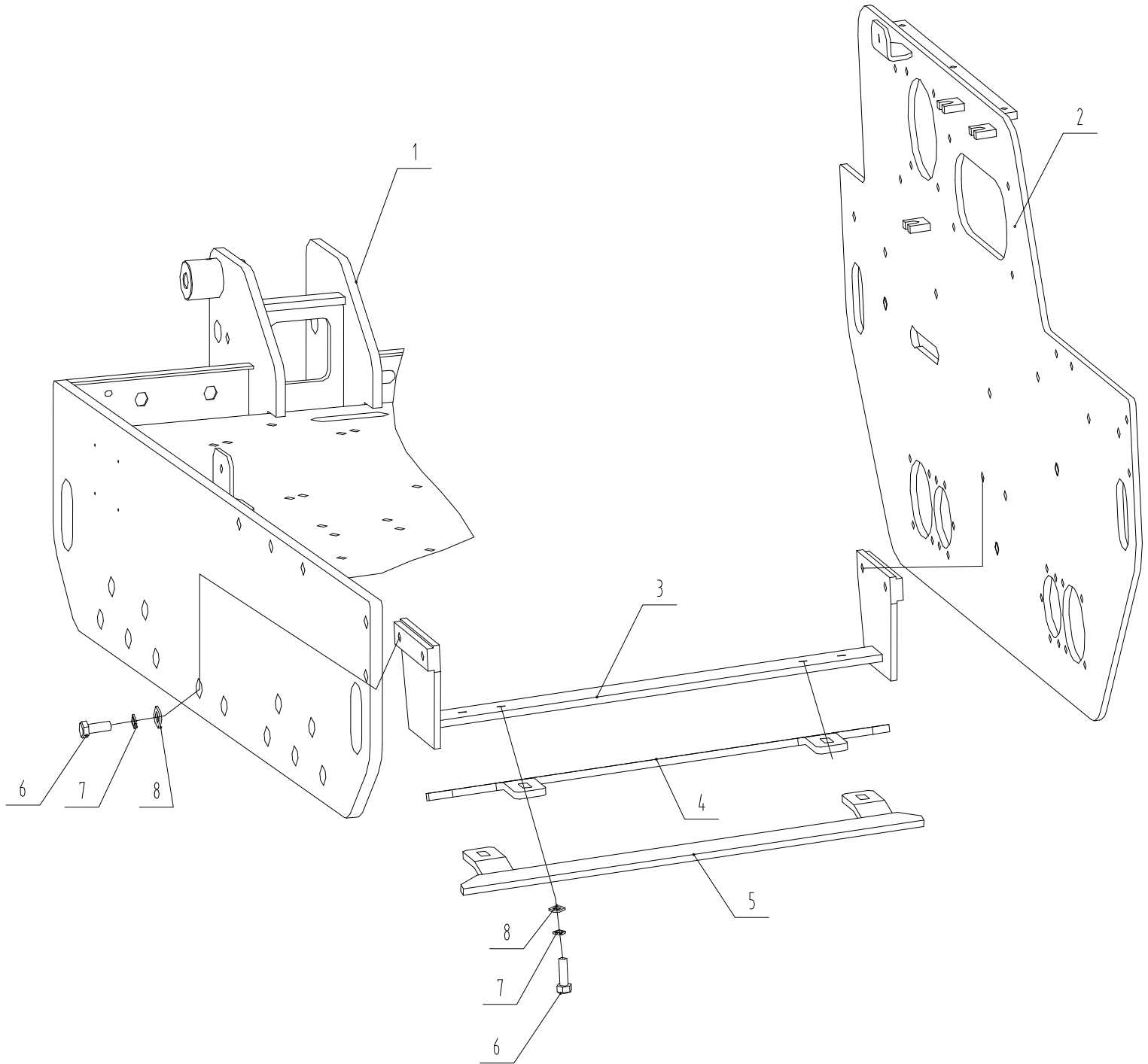
## FRAME ASSEMBLY

SEC.	NO. PARTE	DESCRIPCIÓN	CANTIDAD
1	3070102B	Right plate assembly	1
2	3070101E	Base welded assembly	1
3	3070109B	Front fender	1
4	3070111	Scraper	2
5	3070110	Scraper mounting plate	2
6	2031032	Tubing clip TLPG-216	4
7	3070112A	Sprinkling tube assembly	2
8	3070127B	Sling frame assembly	1
9	3070513	Gas spring	2
10	3070103B	Water tank	1
11	0260706	Cover of water tank	1
12	LSK020502	Inner Hexagon bolt M8X20	4
13	LSK010402	Outer Hexagon bolt M6X16	1
14	DZK020103	Spring washer 6	1
15	DZK010103	Flat washer6	25
16	LMK100102	Spring nut M8	4
17	LSK020503	Inner Hexagon bolt M8X25	5
18	DZK020104	Spring washer 8	19
19	LMK010503	Outer Hexagon bolt M8X25	2
20	DZK010104	Flat washer8	9
21	LSK010603	Outer Hexagon bolt M10X25	11
22	DZK020105	Spring washer 10	14
23	0120518	Extra thick Flat washer10.5 X25	7
24	LSK020505	Inner Hexagon bolt M8X35	8
25	DZK010105	Flat washer10	7
26	LSK010405	Outer Hexagon bolt M6X30	12
27	LMK040103	Lock nut M6	12
28	LMK040104	Lock nut M8	1
29	LSK010605	Outer Hexagon bolt M10X35	3



**COVER ASSEMBLY**

SEC.	NO. PARTE	DESCRIPCIÓN	CANTIDAD
1	3070107B	Side cover assembly	1
2	3070104C	Gasoline upper cover assembly	1
3	3070123	Fixed cover assembly	1
4	2020232	Hinge	2
5	3070507	Bridge type handle	1
6	LMK100102	Spring nutM8	5
7	LSK020502	Inner Hexagon bolt M8X25	9
8	DZK020104	Spring washer 8	19
9	DZK010104	Flat washer8	24
10	LSK010502	Outer Hexagon bolt M8X25	2
11	LSK090501	Half-round inner Hexagon bolt M8X25	8
12	LMK040104	Lock nut M8	8
13	LSK010402	Outer Hexagon bolt M6X16	2
14	DZK020103	Spring washer 6	2
15	DZK010103	Flat washer6	2





**FRAME ASSEMBLY**

SEC.	NO. PARTE	DESCRIPCIÓN	CANTIDAD
1	3070101E	Base welded assembly	1
2	3070102B	Right plate assembly	1
3	3070115	Middle scraper support assembly	1
4	3070114	Rear drum middle scraper	2
5	3070113	Front drum middle scraper	1
6	LSK010603	Outer Hexagon bolt M10X25	8
7	DZK020105	Spring washer 10	8
8	DZK010105	Flat washer10	8

# MPOWER

## MANUAL DE PARTES

RODILLO DOBLE VIBRATORIO  
RWL32



LADA SIN COSTO  
01.800.506.82.86

SÍGUENOS EN:

YouTube



[www.mpower.com.mx](http://www.mpower.com.mx)

Km 126.5 Carretera Federal México-Puebla, Momoxpan, Cholula, Puebla.  
MÉXICO. CP 72760